

**NOTES**

\* 2 OFF

1.5mm  
STAINLESS  
STEEL  
1200 X 2400  
STANDARD  
SHEET

\* 5V USB  
CENTRIFUGAL  
COMPUTER FAN  
(SOURCE: eBay)

\* INSULATION  
BIOCHAR/WOOL

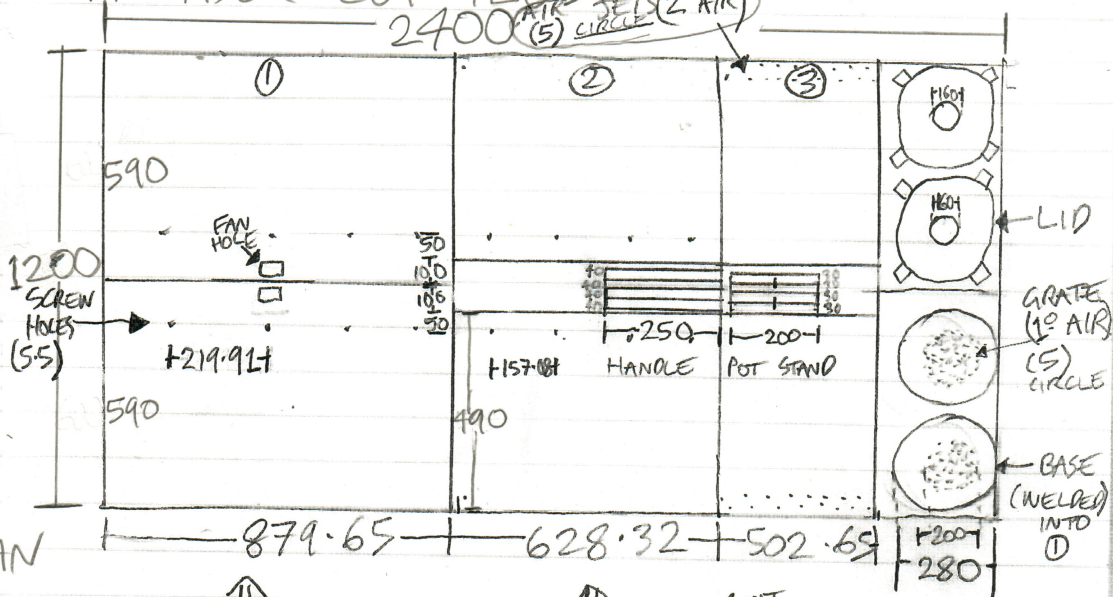
\* SCREWS  
eg 65mm GALV,  
12G (5.5mm),  
HEX HEAD  
(SOURCE: BUNNINGS)

\* CYLINDERS  
ROLLED &  
WELDED  
AFTER  
CUTTING

\* TO EMPTY:  
REMOVE POT/PAN,  
POT STAND & LID  
HOLD ONTO POT  
HANDLES & TIP STAND  
OVER INTO  
STEEL BUCKET  
- JUST ADD  
WATER/COMPOST etc.  
- USE BIOCHAR!  
(SPENT FUEL)  
eg. RICE HUSK  
PELLETS

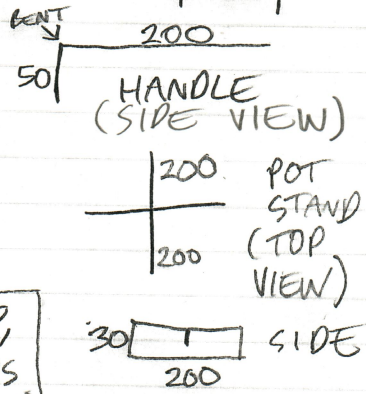
THE 'PERMASTOVE' V2 - SECOND DRAFT

BY PERMACHAR 14/5  
• A LASER CUT TLUD.



SCREW HOLE DISTANCE =  $879.65 / 4 = 219.91$

SCREW HOLE DISTANCE =  $628.32 / 4 = 157.08$



MEASUREMENTS

\* NEED TO MEASURE FAN HOLE  
40mm INSULATION GAP, 20mm 2° AIR GAP,  
280mm DIAMETER BASE & LID, 5mm GAPS  
b/w PARTS

$C_1 = \pi \cdot 280 = 879.65$

$C_2 = \pi \cdot (280 - 80) = 628.32$

$C_3 = \pi \cdot (280 - 120) = 502.65$

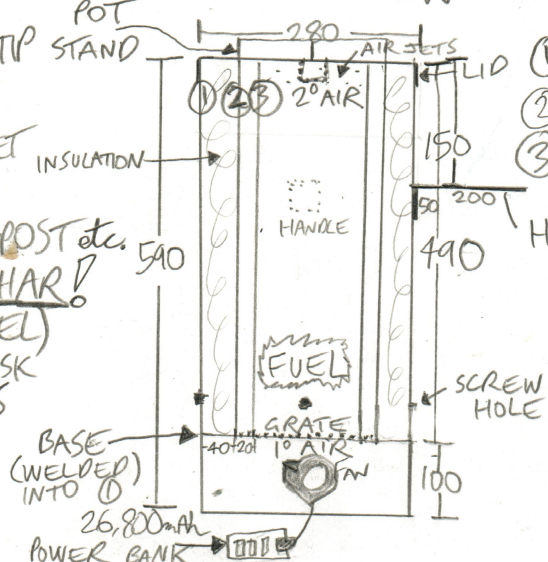
$C_{TOTAL} = C_1 + C_2 + C_3 = 2010.62$

2400 - 2010.62 - 280 = 109.38

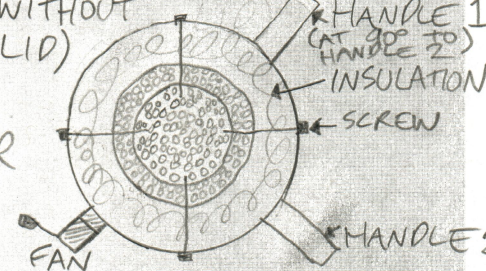
WITH 5mm GAPS b/w PARTS =  $5 \times 5 = 25$

SO,  $109.38 - 25 = 84.38$  SPARE 😊

SIDE VIEW



TOP VIEW (WITHOUT HANDLE 1 & HANDLE 2)



THIS WORK IS LICENSED UNDER A CREATIVE COMMONS ATTRIBUTION 4.0 BY LICENSE