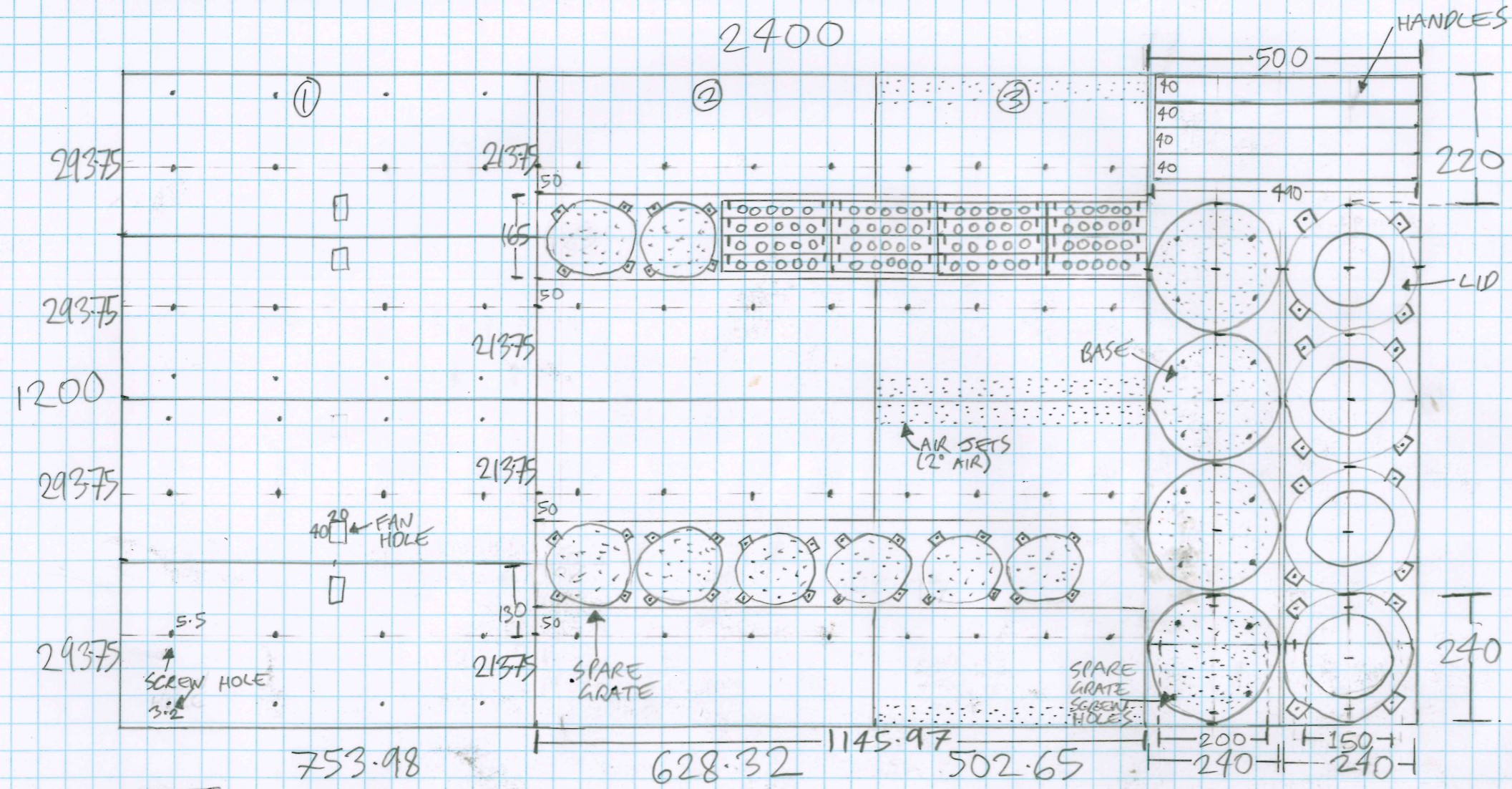


THE 'PERMASTOVE' V3 BY PERMACHAR.NET

19/5/2018



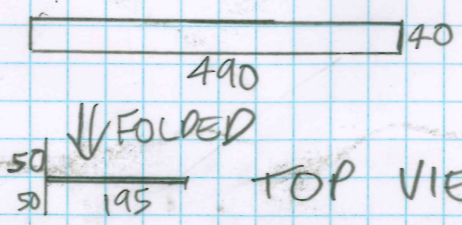
SCALE
1:10

- NOTES
- * OFF A STANDARD SHEET OF 1.5mm 304 STAINLESS STEEL
 - * CONSTRUCTION REQUIRES ROLLING OF CYLINDERS, WELDING OF BASE, FOLDING & WELDING HANDLE
 - * INSULATION IS BIOCHAR
 - * CYLINDERS ARE SCREWED IN

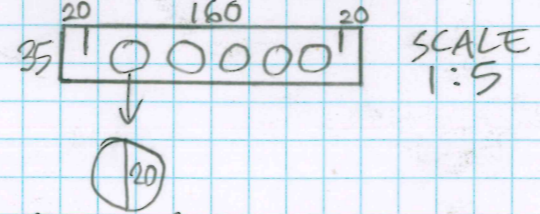
NOTES

- * SPARE GRATE (2 PER STOVE) FOR INNER CYLINDER ONLY (160mm DIAMETER)
- NEED TO BE SCREW HOLES (3.2mm) IN 2° AIR GAP AREA B/W MIDDLE & INNER CYLINDERS
- * SCREW HOLES FOR CYLINDERS
 - ① $753.98/4 = 188.50$ b/w HOLE
 - ② $628.32/4 = 157.08$ "
 - ③ $502.65/4 = 125.66$ "
- 5.5mm gap HOLE
- * BASE IS WELDED INTO OUTER CYLINDER
- * LID IS SCREWED IN

* HANDLE

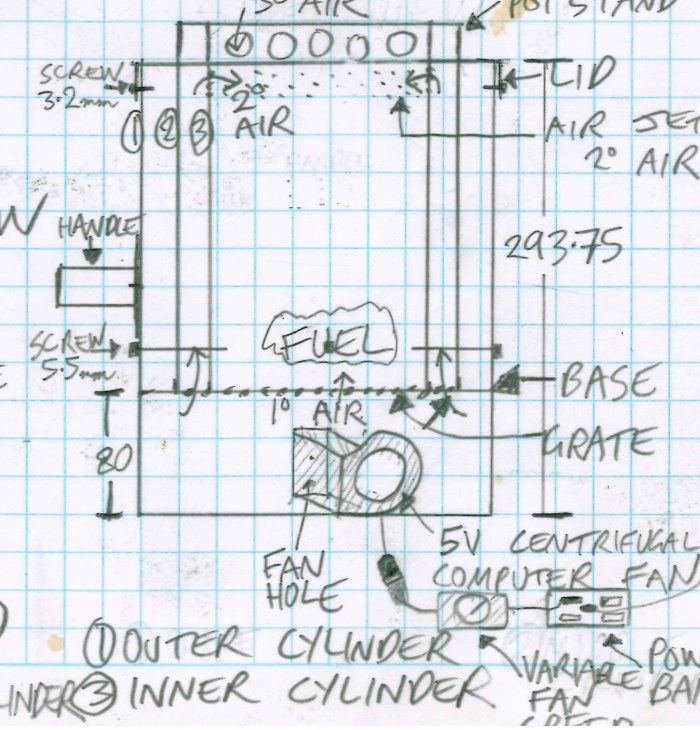


* POT STAND

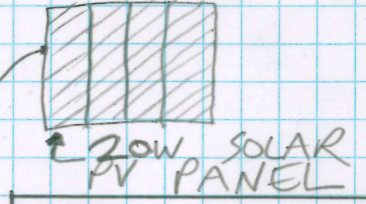
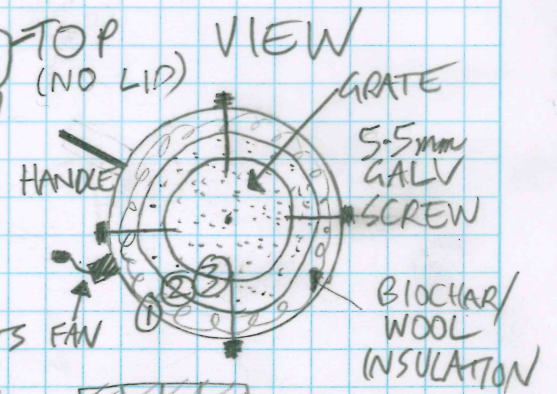


* LIDS TABS ARE 50x50

SIDE VIEW



NOT DRAWN TO SCALE



THIS WORK IS LICENSED UNDER A CREATIVE COMMONS ATTRIBUTION 4.0 INTERNATIONAL BY LICENSE

- ① OUTER CYLINDER
- ② MIDDLE CYLINDER
- ③ INNER CYLINDER